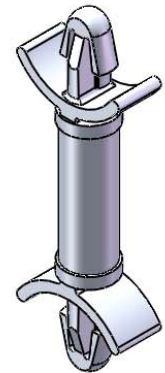


TO SNAP-LOCK IN A .125±.002
[3.18±0.05] DIA. HOLE, IN A
.031-.078 [0.79-1.98] PANEL THICKNESS
(BOTH ENDS)



MATERIAL: NYLON 6/6 UL 94 V-2 (RMS-01) COLOR: NATURAL PART NO.	DIM. "A"±.015 [0.4]
DLCBSM-3-01	3/16 [4.8]
DLCBSM-4-01	1/4 [6.4]
DLCBSM-5-01	5/16 [7.9]
DLCBSM-6-01	3/8 [9.5]
DLCBSM-7-01	7/16 [11.1]
DLCBSM-8-01	1/2 [12.7]
DLCBSM-9-01	9/16 [14.3]
DLCBSM-10-01	5/8 [15.9]

NOTES:

- MATERIAL: NYLON 6/6 UL 94 V-0 (RMS-19)
COLOR: NATURAL.
AVAILABLE BY SPECIAL ORDER ONLY.
- ALTERNATE UNITS FOR REFERENCE ONLY.

TITLE: DUAL LOCKING CIRCUIT BOARD SUPPORT, MINI			DWG IN IN [MM]		
CREATED USING SOLIDWORKS	FILE #: DLCBSM	DWN: SK	APP: RT	FINAL	
TOLERANCES UNLESS NOTED XX=±.010 .XXX=±.005 FRAC.=±1/64 ANG.=±1°	SHEET: 1 OF 1	SHEET SIZE: A	DT: 11/29/06	CHKD: SJ	PART #
RE: RICHCO, INC.	RICHCO, INC.		RICHCO, INC. ENG@RICHCO-INC.COM (773) 539-4060		PRINT TYPE
D	REDRAWN, SEE ECN #1208 FOR CHANGES	SK	11/29/06	SEE TABLE	
-	SEE ENGINEERING FOR REVISIONS A-C	---	----	CA	
REV.	DESCRIPTION	ENGR.	DATE		